



EasyLauncher



EasyLauncher User Manual

Table of Contents

1. Overview	1
2. System Requirement.....	1
3. cMT Viewer.....	1
Connecting cMT-SVR	2
Switching between cMT-SVR projects.....	4
4. EasyLauncher	5
Running cMT Viewer.....	6
Switching Tasks.....	6
Home.....	6
Setting EasyLauncher	6

1. Overview

EasyLauncher combines the function of cMT Viewer and Launcher. cMT Viewer allows Windows PC to quickly connect cMT-SVR to operate HMI. On the other hand, EasyLauncher, as an application management tool, takes only a few easy steps before it can deliver tablet-like user experience on a Panel PC. The user can customize app icon layout and open the app by tapping the icon. EasyLauncher offers a user interface management and combines cMT Viewer HMI software, making it an indispensable program for controlling cMT Series HMIs on cMT-iPC.


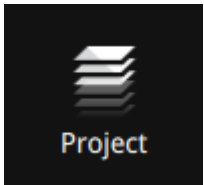
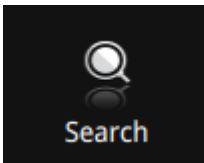
2. System Requirement

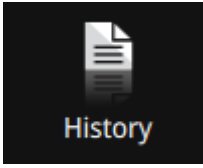
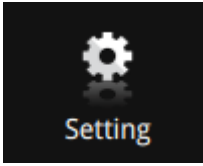






- PC Operation System: Windows XP, Windows 7, Windows 8 / 8.1
(Require Administrator privilege)
- Internet Connection

3. cMT Viewer

EasyLauncher includes the complete cMT Viewer program; therefore it can access cMT-SVR. When starting EasyLauncher, the cMT Viewer program will run first. Additionally, cMT Viewer interface has a link to EasyLauncher; therefore switching between these two programs is easy. The interface of cMT Viewer is similar to the PC version.

cMT Viewer user interface:

Icon	Description
	This is the Start Button. When running cMT Viewer, tapping this button enters the settings page.
	Project tab lists the logged in cMT-SVRs. Each Viewer device can control three cMT-SVRs simultaneously.
	Search tab lists all the cMT-SVRs on the same network.

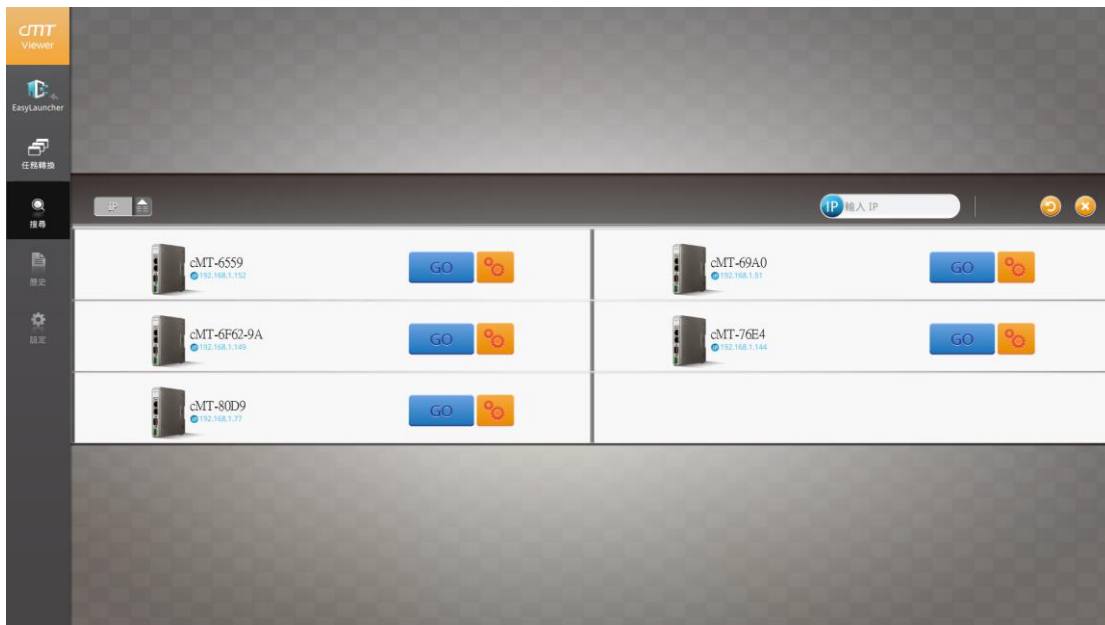
 <p>History</p>	<p>History tab lists the cMT-SVRs previously logged in.</p>
 <p>Setting</p>	<p>Setting tab displays the current cMT Viewer version information.</p>
	<p>Tap this icon to make cMT-SVR CPU LED (green) blink to identify the cMT-SVR.</p>
	<p>Tap this icon to load cMT-SVR project to the client device and run the project.</p>
	<p>Tap this icon to configure cMT-SVR system settings.</p>
	<p>In Search tab, sort cMT-SVRs according to IP address.</p>
	<p>In Search tab, sort cMT-SVRs according to HMI name.</p>
	<p>In History tab, clear all the login records.</p>

Connecting cMT-SVR

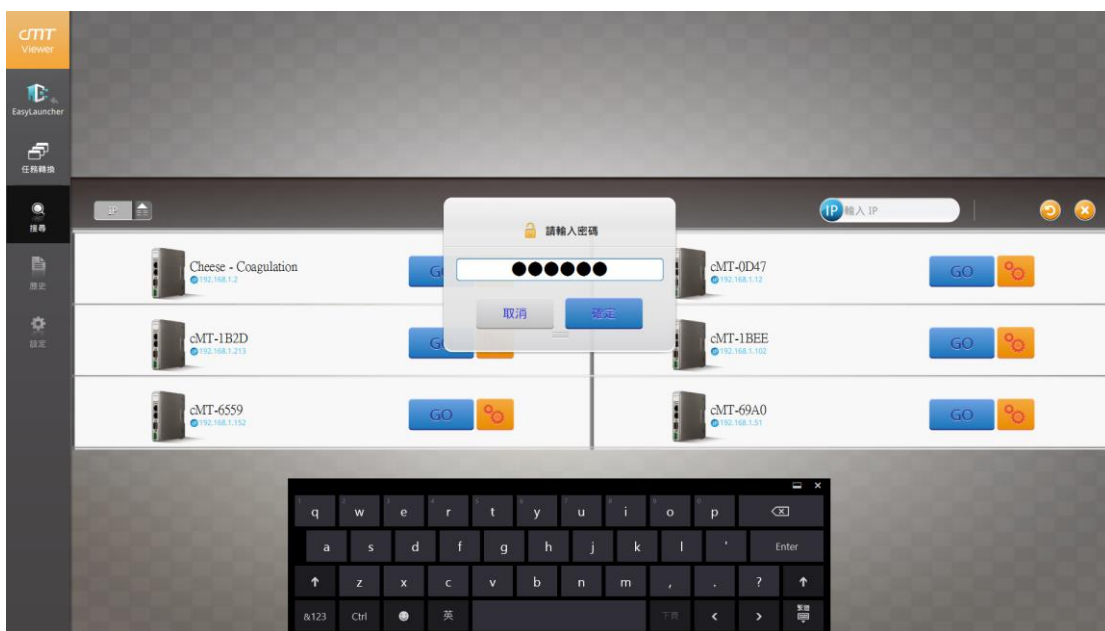
Step 1. Run cMT Viewer, tap Start Button to configure.



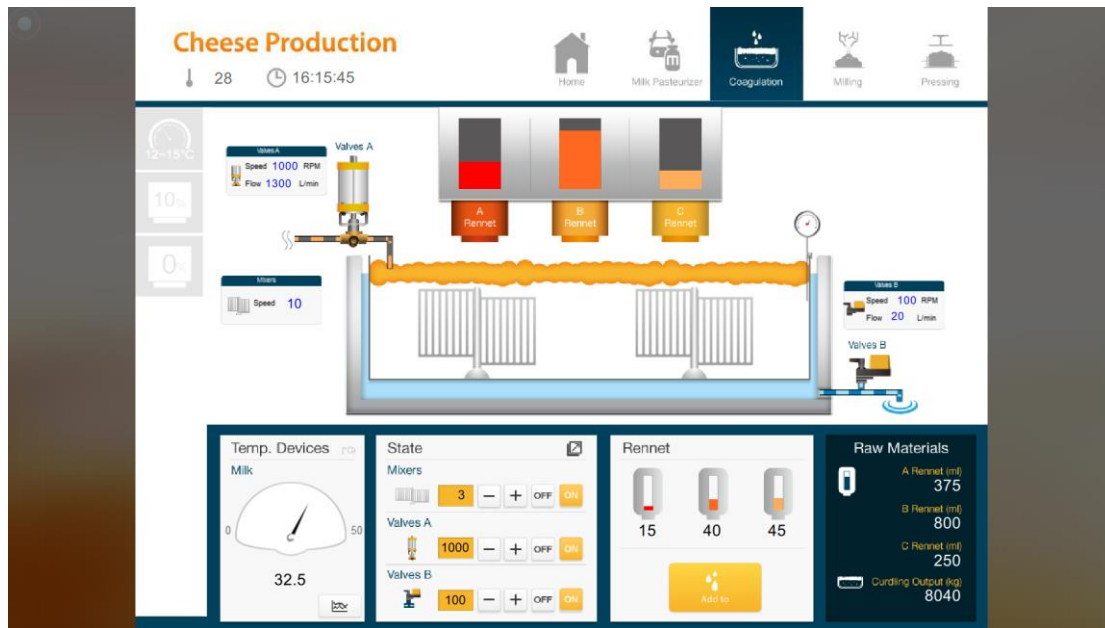
Step 2. In Search tab, search all the cMT-SVRs on the same network.



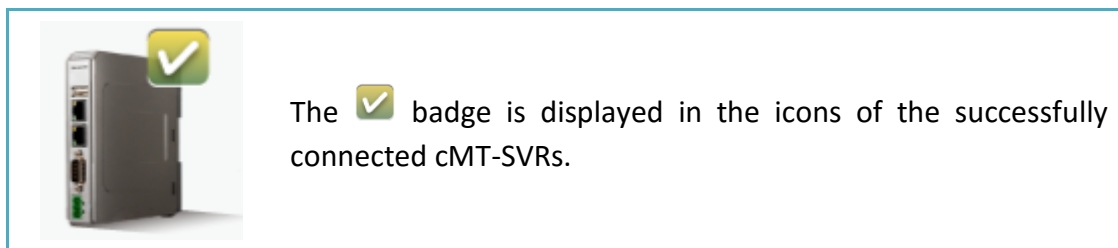
Step 3. Select the cMT-SVR, tap  and then enter password.




Step 4. The project will be displayed after loaded.




Tap Start Button to return to setting screen. To connect another cMT-SVR, repeat the preceding process to search for cMT-SVR and then load the project.



One client device can login to up to three cMT-SVRs simultaneously. Once the limit has been reached the  buttons for other cMT-SVRs will be unavailable and grayed out.

Switching between cMT-SVR projects

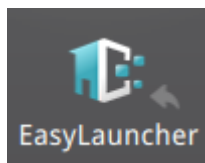
When multiple cMT-SVRs are connected, to switch between cMT-SVR projects, select from Project tab. To delete a project of a connected cMT-SVR, tap .



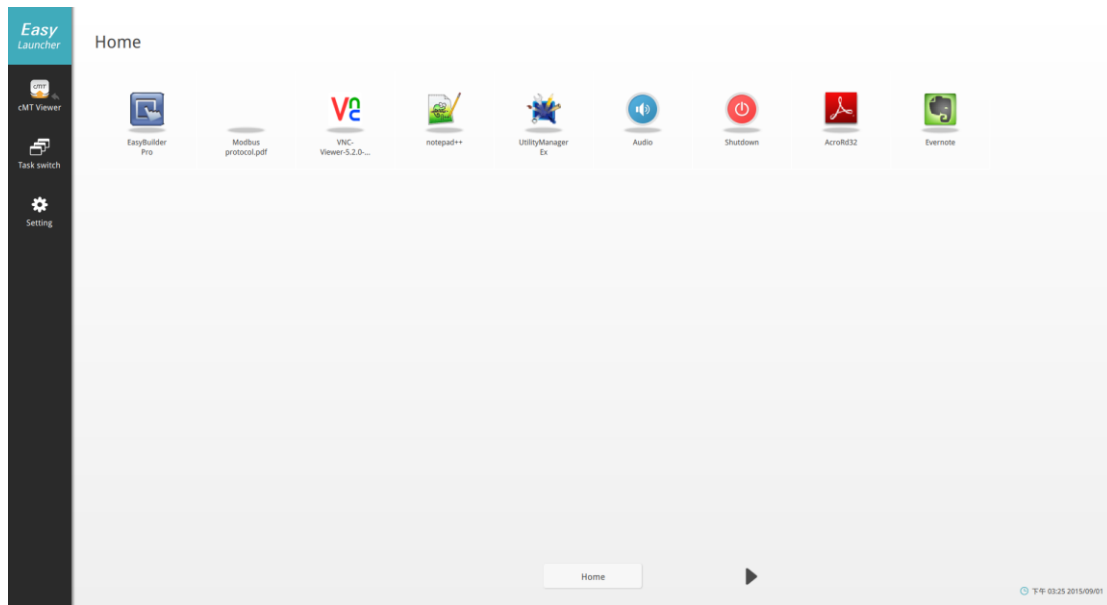
4. EasyLauncher

EasyLauncher offers a user interface for application management that also combines cMT Viewer HMI software. EasyLauncher is an indispensable program for controlling cMT Series HMIs on cMT-iPC.

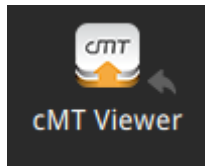
When starting EasyLauncher, the cMT Viewer program will run first. Press the Start Button to go back to cMT Viewer menu, and use EasyLauncher link in the menu to enter EasyLauncher main menu.



Tap this icon to switch to EasyLauncher.

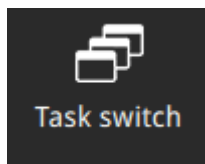


Running cMT Viewer



Tap this icon to switch to cMT Viewer.

Switching Tasks

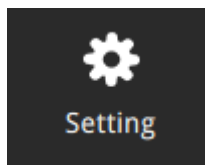


Tap this icon to switch to cMT Viewer or other running tasks.

Home

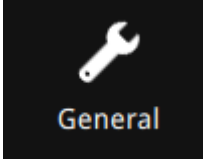
Tapping icons in the home menu opens the corresponding program. The pages can be password protected.

Setting EasyLauncher




Entering EasyLauncher settings requires password. The default password is "111111". In the settings page exist three tabs: General, Page, and Start up.


General



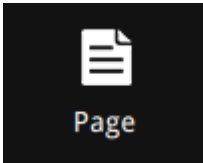
EasyLauncher general settings.



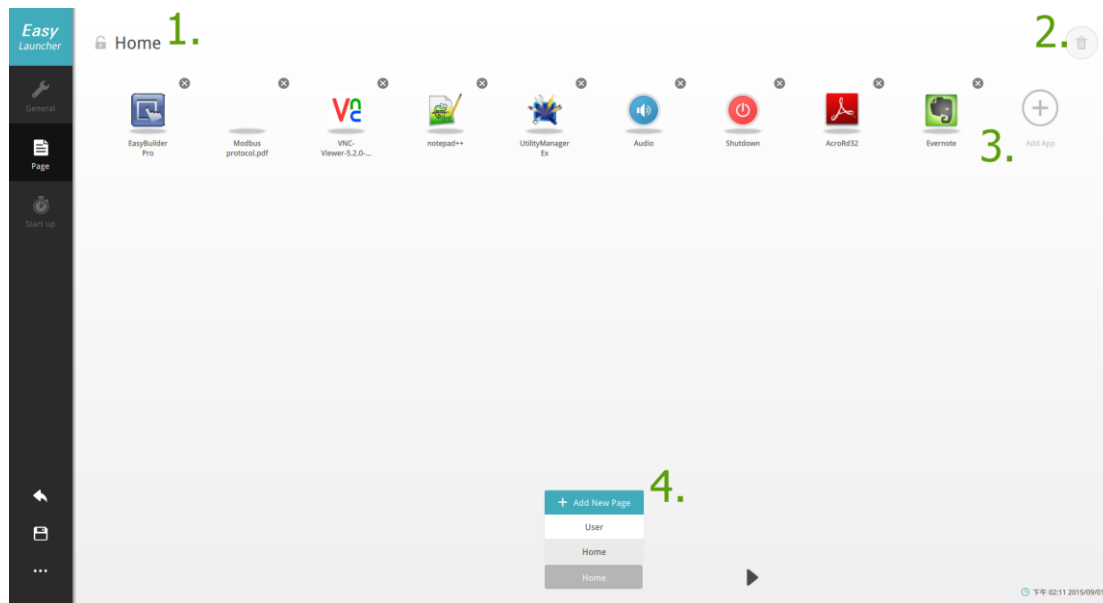
Item	Function
Password	Change the password for entering EasyLauncher general settings.
Login	Set whether to log in Windows account automatically. If auto-login is enabled, saving account name and password is necessary.
Start Button	<p>Set whether to show Start Button in cMT Viewer. If the Start Button is set to be hidden, the user can decide to hide it in one of the four corners of the screen. Press and hold the designated corner to return to the start menu.</p> <div style="border: 1px solid #ccc; padding: 5px; margin-top: 10px;"> <ul style="list-style-type: none"> • Start button <div style="display: flex; justify-content: space-between; align-items: center;"> Show Start button <input type="checkbox"/> OFF </div> <div style="margin-top: 10px;"> <p>Hidden Start position (Long press for 1.5 seconds to show start menu)</p>  </div> </div>

Windows taskbar	Set whether to show Windows taskbar.
On Screen Keyboard	Set whether to display on screen keyboard.
	Close EasyLauncher.

Page



Place the programs in different pages and manage user privileges for each page using password.



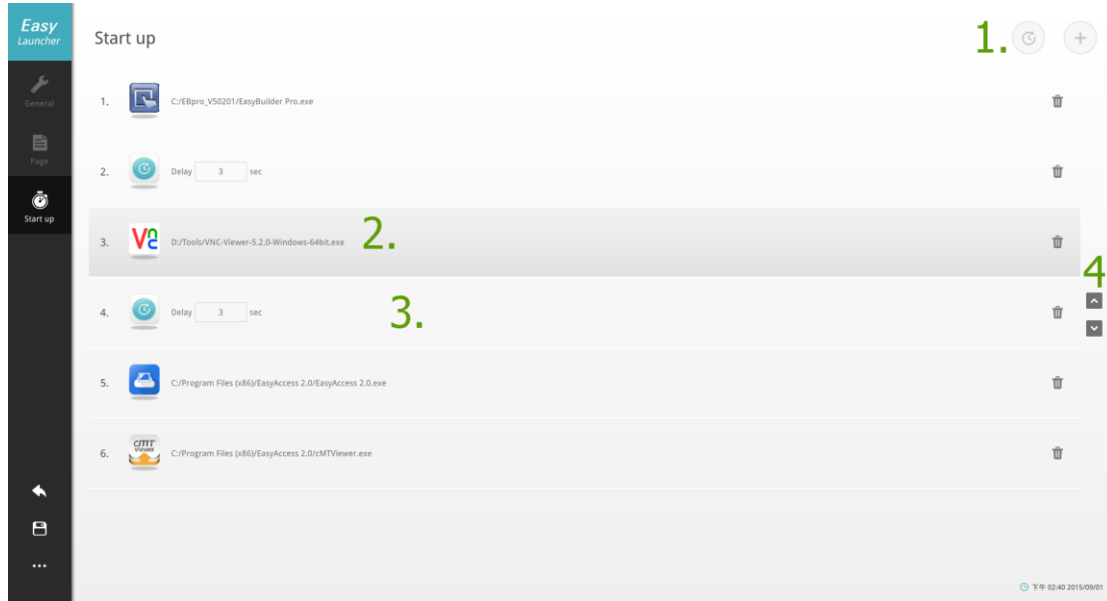
No.	Function
1.	Set the password and the title of the page.
2.	Delete current page.
3.	Add / Remove applications.
4.	Add a new page or move to another page.

1. After setting password, the password must be entered in EasyLauncher to open the corresponding page.
2. When adding a new application, the *.exe file on PC can be added, or add the built-in features (Switch on / off the device or volume control)

Start up

Start up

Set the programs to run at startup and the order of running programs.



No.	Function
1.	Add program or delay timer.
2.	Program execution lineup.
3.	Delay timer setting.
4.	Change the order of the selected program.

Others

Icon	Function
	Leave EasyLauncher.
	Save current EasyLauncher settings.
	Import / Export EasyLauncher settings file.