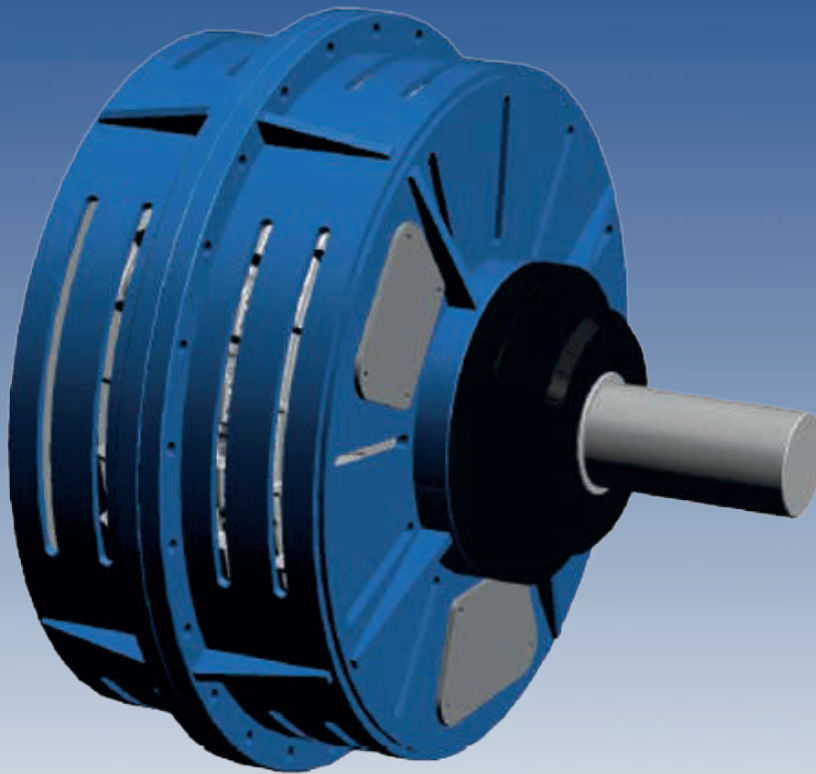




Rotofluid KDA

Fluid Couplings for
internal combustion engines

For Power up to 600 kW

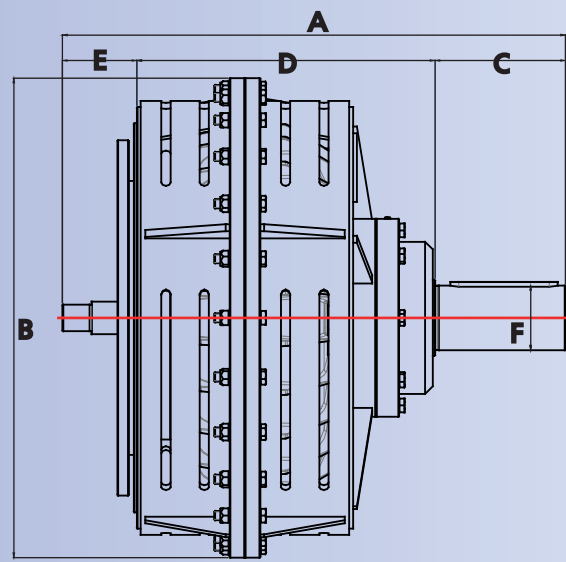
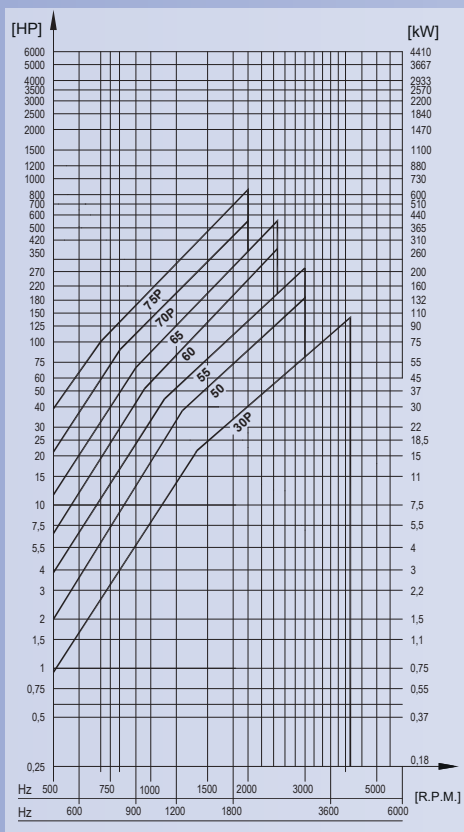


Fluid Couplings - KDA series

KDA fluid coupling specifically designed for internal combustion engines equipped with bell housing and flywheel connection according to SAE standard, is supplied with a super elastic coupling able to dump vibrations.

KDA fluid coupling due to his design help the engine to reach idle speed without load, transmitting the torque softly.

KDA fluid coupling find large use on different sectors as Industry, Agriculture – Forest and also on Naval applications, transferring torque, protecting the engine and the application in case of jam.



Size	A	B	C	D	E	F	SAE Flywheel	SAE Housing
30P	374,7	400	99,7	182	93	55	10	4
50	468	525	140	231	97	57	11,5	3
55	552	525	165	290	97	63	11,5	3
60	656	630	170	389	97	85	11,5 - 14	3 - 2 - 1
65	656	630	170	389	97	85	11,5 - 14	3 - 2 - 1
70P	739	790	180	462	97	90	14	1
75P	739	790	180	462	97	90	14	1 - 0

* For selection please contact esco antriebstechnik gmbh